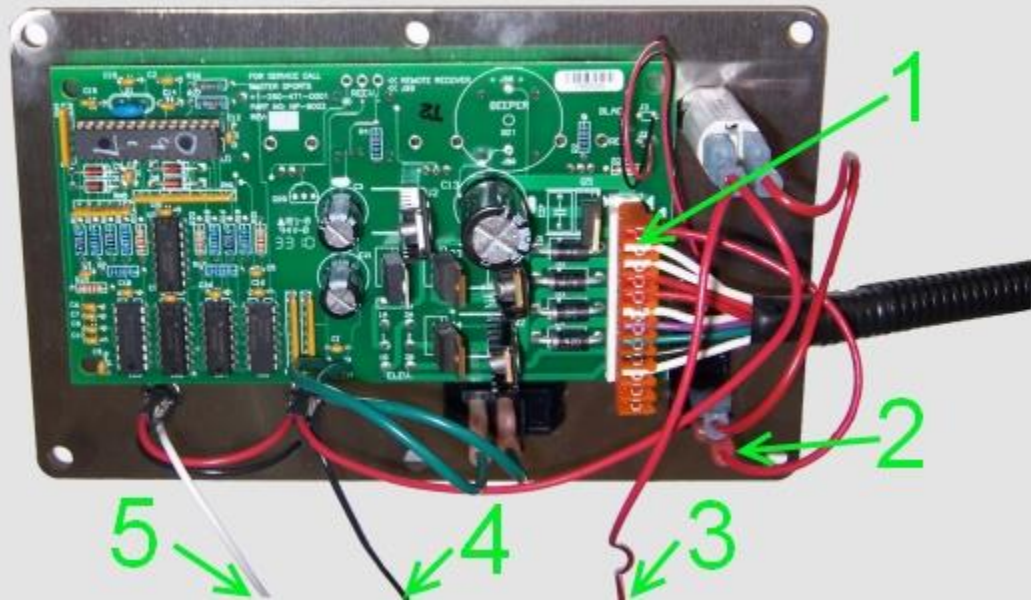


SAM P1 Control Board Instructions



Numbers 1, and 2 must be disconnected from the control board.
Numbers 3, 4, and 5 run from the control board and must be disconnected from inside the machine.

1. Wire harness (orange connector) disconnects from the control board.
2. Red wire from the orange connector disconnects from the on/off switch.
3. Red wire disconnects from the red battery cable.
4. Black wire disconnects from the black battery cable.
5. White wire disconnects from wire harness.

- [Removing the base housing](#) might be helpful for disconnecting numbers 3, 4, and 5.
- Note: Machines with a remote control will need the receiver cable disconnected